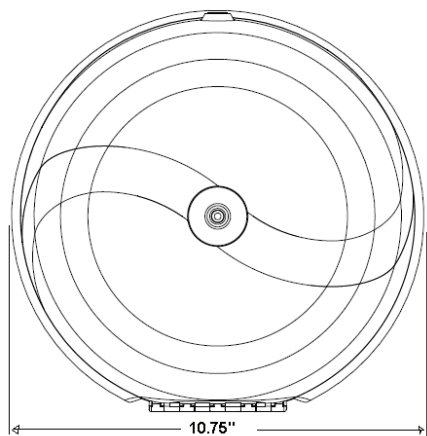
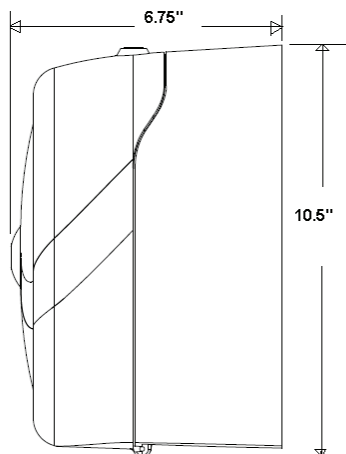


SKU # 56500 (Splash)
56501 (Smoke)

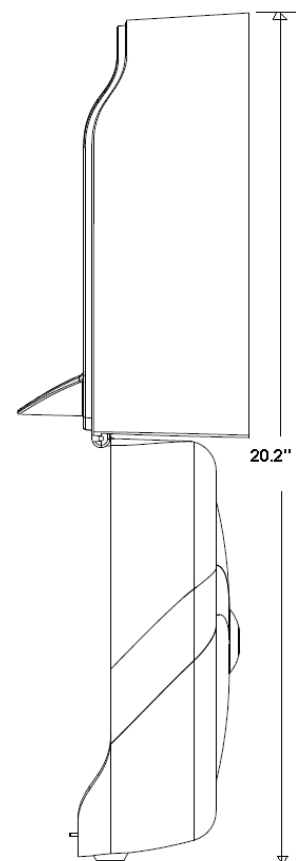
SofPull™ Tissue Dispenser Specification Sheet



Front View



Right View



Right View - Cover Open

Specifications:

This dispenser is constructed of high impact polymer materials to provide durability and ease of cleaning. An optional replacement nozzle, GP SKU# 56504(smoke) or 56505(blue) is available for locations requiring continuous flow of tissue from the dispenser.

Replacement Parts:

- 56502 - Smoke SofPull™ Tissue Nozzle
- 56503 - Splash Blue SofPull™ Tissue Nozzle
- 56504 - Smoke SofPull™ Tissue ADA Nozzle
- 56505 - Splash Blue SofPull™ Tissue ADA Nozzle
- 56506 - SofPull™ Tissue Dispenser Key

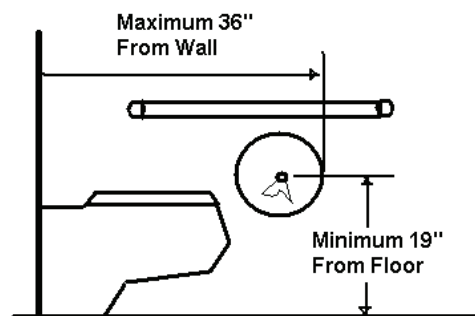
Overall Dimensions:

Dispenser: 10.75" W x 10.5" H x 6.75" D

Overall Weight:

Dispenser: 2.2 lbs (0.98 kg)

Capacity: 1-Roll SofPull™ Tissue, GP SKU #19500



Mounting Diagram

For questions or comments, please call
1-866-HELLO GP (435-5647)