

Product data sheet

Characteristics

HOM2040L125PC

Load center, Homeline, 1 phase, 20 spaces,
40 circuits, 125A convertible main lugs, PoN,
NEMA1, combo cover



Main

Product Type	Load Center
Marketing Trade Name	Homeline
Load Center Type	Main lugs
Rated Current	125 A
Number of Spaces	20
Number of Circuits	40
Enclosure Rating	NEMA 1 for indoor installation NEMA 3R outdoor
Cover Type	Combination flush/surface cover
Electrical Connection	Lugs

Complementary

Short Circuit Current Rating	10 kA
Number of Tandem Breakers	20
Number of Phases	1 phase
Rated Operational Voltage	120/240 V AC
Wire Size	AWG 6...AWG 2/0 aluminium AWG 6...AWG 1 copper AWG 6...AWG 1/0 copper
Wiring Configuration	3-wire
Cover Finish	Gray baked enamel
Busbar Material	Tin plated aluminium busbar
Enclosure Material	Welded sheet steel
Surface Finish	Baked enamel Gray
Box Number	8
Height	26.02 in (661 mm)
Width	14.25 in (362 mm)
Depth	3.74 in (95 mm)

Environment

Ambiant Air Temperature for Operation	23 °F (-5 °C) 104 °F (40 °C)
Product Certifications	UL E-6294

Ordering and shipping details

Category	00045 - HOM LC&CVR,12-42 CKT,NEMA1
Discount Schedule	DE3C
GTIN	00785901860693
Nbr. of units in pkg.	1
Package weight(Lbs)	24.1 lb(US) (10.93 kg)
Returnability	Yes
Country of origin	US

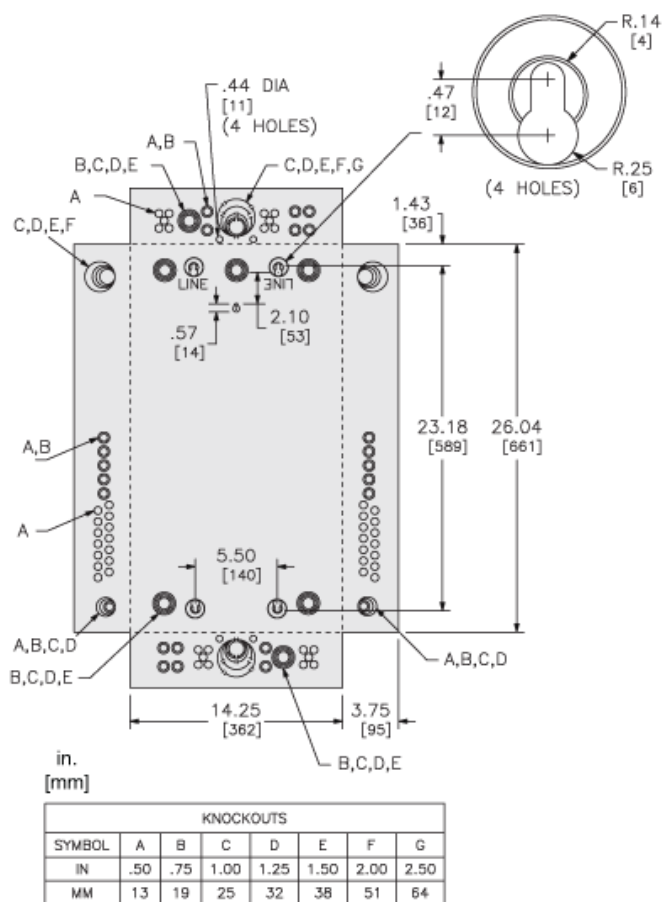
Packing Units

Unit Type of Package 1	PCE
Package 1 Height	5.60 in (14.224 cm)
Package 1 width	16.00 in (40.64 cm)
Package 1 Length	28.90 in (73.406 cm)
Package 2 Weight	454.00 lb(US) (205.931 kg)

Offer Sustainability

Sustainable offer status	Green Premium product
California proposition 65	WARNING: This product can expose you to chemicals including: Lead and lead compounds, which is known to the State of California to cause cancer and birth defects or other reproductive harm. For more information go to www.P65Warnings.ca.gov
REACH Regulation	REACH Declaration
REACH free of SVHC	Yes
EU RoHS Directive	Compliant EU RoHS Declaration
Toxic heavy metal free	Yes
Mercury free	Yes
RoHS exemption information	Yes
China RoHS Regulation	China RoHS Declaration
Environmental Disclosure	Product Environmental Profile

Approximate Dimensions



Connections and Wiring Diagrams

