



**Part #: 118711**

**USN #: 334021017**

**1/6 HP**

**SUBMERSIBLE UTILITY PUMP**



Exclusively Distributed By:  
HD Supply  
3400 Cumberland Blvd. SE  
Atlanta, GA 30339

HD Supply is here to help.  
Online Chat: [hdsupplysolutions.com](https://hdsupplysolutions.com)  
Email: [customercare@hdsupply.com](mailto:customercare@hdsupply.com)  
Call: 1-800-431-3000

© 2025  
Made in China

# SAFETY INSTRUCTIONS

Please read and understand this entire manual before attempting to assemble, operate or install the product. If you have any questions regarding the product, please call customer service at 1-800-431-3000. Failure to comply with instructions and designed operation of this system may void warranty. **ATTEMPTING TO USE A DAMAGED PUMP** can result in personal injury or death!

- Do not lift pump by power cord.
- Do not touch an operating motor housing. The motor is designed to operate at high temperatures.
- Do not pump flammable or explosive liquids such as oil, gasoline, kerosene, ethanol, etc. Do not use in the presence of flammable or explosive vapours. Using this pump with or near flammable liquids can cause an explosion or fire, resulting in property damage, serious personal injury and/or death.
- Do not disassemble the motor housing. The motor has NO repairable internal parts, and disassembling it may cause dangerous electrical wiring issues.
- This pump is made of high-strength, corrosion-resistant materials. It will provide trouble-free service for a long time when properly installed, maintained, and used. However, inadequate electrical power to the pump, dirt, or debris may cause the pump to fail. Please carefully read the manual and follow the instructions regarding common pump problems and remedies.

## Additional Safety Precautions

1. Know the pump applications, limitations, and potential hazards.
2. Make certain the electrical power source is adequate for the requirements of the pump.
3. ALWAYS disconnect the power to the pump before servicing.
4. Release all pressure within system before servicing any component.
5. Drain all water from system before servicing.
6. Secure discharge line before starting pump. An unsecured discharge line will whip, possibly causing personal injury and/or property damage.
7. Secure the pump on a solid base to keep the pump vertical and above mud and sand during operation to maximize pumping efficiency and prevent clogging and premature pump failure.
8. Check that all pipe connections are tight to minimize leaks.
9. Connect the pump DIRECTLY to a grounded, GFCI outlet.
10. Extension cords may not deliver sufficient voltage to the pump motor. Extension cords present a life threatening safety hazard if the insulation becomes damaged or the connection ends fall into water.
11. Make certain the electrical circuit to the pump is protected by a 10 Amp or larger fuse or circuit breaker.
12. Periodically inspect the pump and system components to be sure the pump inlets are free of mud, sand, and debris. DISCONNECT THE PUMP FROM THE POWER SUPPLY BEFORE INSPECTING.
13. Do not handle pump or pump motor with wet hands or when standing on wet or damp surface, or in water.
14. Wear safety goggles at all times when working with pumps.
15. Follow your local electrical and safety codes.
16. This unit is designed only for use on 115 volts (single phase), 60 Hz, and is equipped with an approved 3-conductor cord and 3-prong grounded plug. DO NOT REMOVE THE GROUND PIN UNDER ANY CIRCUMSTANCES. The 3-prong plug must be directly inserted into a properly installed and grounded 3-prong, grounding-type receptacle. Do not use this pump with a 2-prong wall outlet. Replace the 2-prong outlet with a properly grounded 3-prong receptacle (a GFCI outlet) installed in accordance with your local codes and ordinances. All wiring should be performed by a qualified electrician.

17. Protect the electrical cord from sharp objects, hot surfaces, oil, and chemicals. Avoid kinking the cord. Do not use damaged or worn cords.
18. Failure to comply with instructions and designed operation of this unit may void warranty. **ATTEMPTING TO USE A DAMAGED PUMP** can result property damage, serious personal injury and/or death.
19. For safety, the pump motor has an automatically resetting thermal protector that automatically will turn off the pump if it becomes too hot. Once the thermal protector detects that the pump has cooled to a safe temperature, it will allow the pump to operate normally. If the pump is plugged in, it may restart unexpectedly.
20. Before using the pump, check hose for holes or excess wear, which could cause leaks, and be sure hose is not kinked or making sharp angles. A straight hose allows the pump to move the greatest amount of water quickly, and also check that all hose connections are tight to minimize leaks.
21. Always make sure the pump is unplugged as soon as the water level reaches 1/4 in. At water levels less than 1/4 in., the pump is attempting to pump air, which will cause the pump to overheat and wear out. Running the pump without sufficient water will damage the pump and void the pump's warranty.

## DESCRIPTION

- This submersible utility pump is designed for water removal applications. Pump water only with this pump. It can drain or remove water from the following: pits, sinks, window wells, basements, swimming pool covers, boats, low spot in yards, or other flooded areas.
- This pump has not been tested or approved for use in swimming pools or in salt-water marine areas. This pump is not designed to function as a permanently installed sump pump. It is also not engineered to be run continuously as a "fountain" or "waterfall" pump.

## INSTALLATION

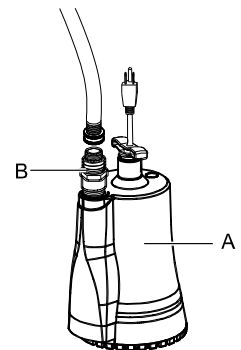
**CAUTION:** Always use the handle to lift the pump. Never use the power cord to lift the pump. To avoid skin burns, unplug the pump and allow time for it to cool after periods of extended use.

### 1. Connecting a 3/4 in. garden hose

- Attach a 1 in. female adaptor (B) to the pump discharge.
- Attach a garden hose with a 3/4 in. garden hose thread (not included) to the adaptor.

**NOTE:** Be sure the 3/4 in. garden hose thread connector has a rubber gasket to minimize water leaks.

**NOTE:** The larger the inside diameter and the shorter the length of hose, the less pressure that is lost (or the larger the flow rate).

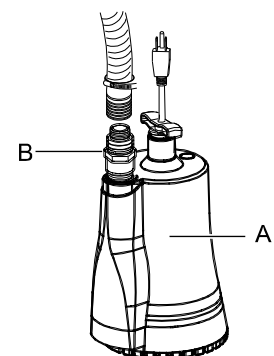


### 2. Connecting a 1-1/4 in. hose kit

If you would prefer to use a 1-1/4 in. hose kit (not included) in order to pump water away more quickly.

- Attach the adaptor (B) to the pump (A) discharge.
- Securely attach the hose kit (not included) to the adaptor (B).

**WARNING:** Secure the discharge hose before plugging in the pump. An unsecured discharge hose may "whip" possibly causing personal injury, and/or property damage.



# OPERATION

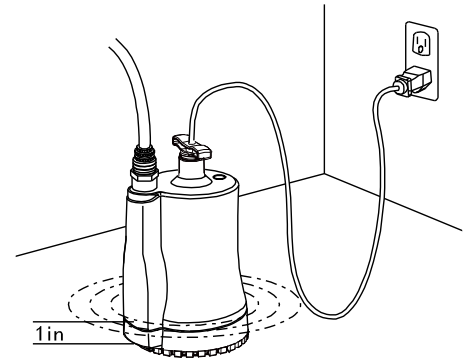
## 1. Plugging in the pump

- Place the pump on a solid base in flooded area or any place that you would like to remove water. Plug the pump into a 115 volt GFCI power outlet

**WARNING:** Do not handle the pump or pump motor with wet hands or when standing on a wet or damp surface, or in water.

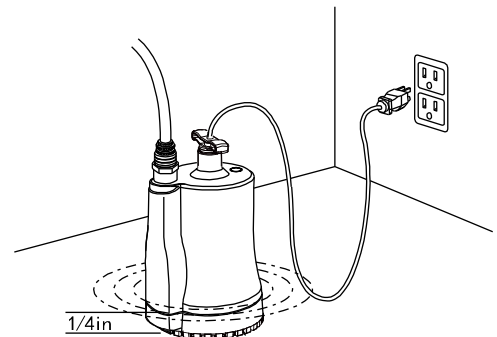
**NOTE:** Place upright on a solid base.

**NOTE:** The pump must be standing in at least 1 in. (25.4 mm) of water before you start it.



## 2. Operating the pump

- Allow the pump to run and monitor its progress.
- Unplug the pump when it has removed water down to approximately 1/4 in. (6.4 mm).
- Remove the pump and hose from the location when finished pumping. The hose still has water that can drain back through the pump. Remove remaining water with a squeegee, mop, sponge, towel, wet/dry vacuum, etc.



**CAUTION:** Do not run the pump dry. Operating the pump without water will cause damage to the seals and will cause the pump to fail, thereby voiding the pump's warranty.

**NOTE:** After starting, the pump will lower the water level to 1/4 in. (6.4 mm) before losing suction. It will not pick up water less than 1/4 in. (6.4 mm) deep when running and will not operate successfully if started in only 1/4 in. (6.4 mm) of water.

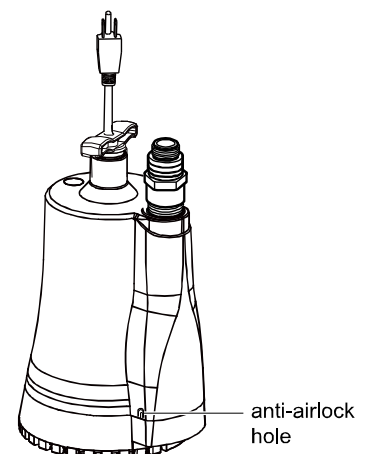
# AIRLOCK

This pump is a centrifugal utility pump, designed to efficiently remove water.

**However, it cannot move air. If air is trapped inside the pump (a condition called “airlock”), the pump cannot pump water out even though the pump is completely submerged. This pump has an anti-airlock hole.** Air flows out through the anti-airlock hole, eliminating the airlock so that the pump can operate properly. If debris blocks the anti-airlock hole, unplug the pump, clean out the anti-airlock hole, and restart the pump. Alternately, **drain the water out of the garden hose, keep the end of the hose out of the water, and plug in the power cord, restarting the pump.**

**CAUTION:** This hole is for anti-airlock purposes. Leakage of air or water is **NORMAL**.

**DO NOT BLOCK THIS HOLE!**



# CAPACITY

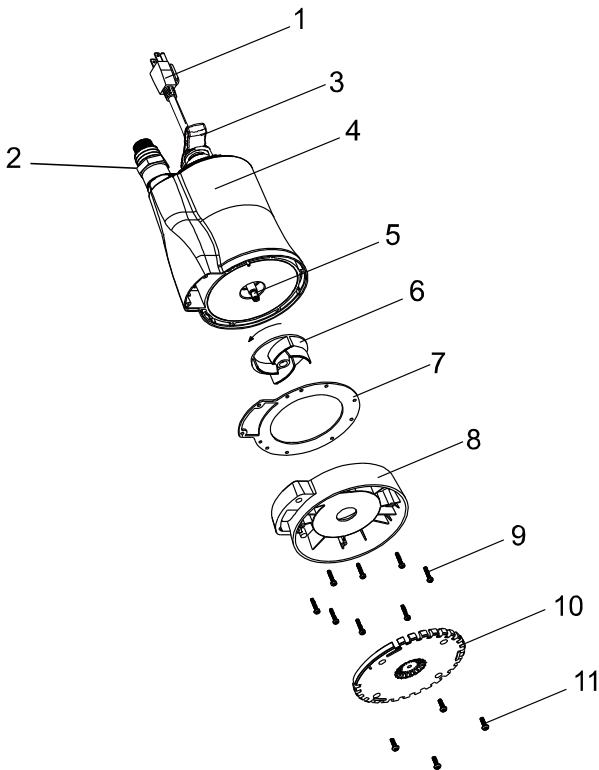
Part #	HP	GPH of Water @ Total Feet Of Lift						Max. Lift
		0 ft.	5 ft.	10 ft.	15 ft.	20 ft.	25ft.	
118711	1/6	1500	1400	1300	1100	750	300	0

# SPECIFICATION

- Power supply required: 115V AC, 60 HZ
- Water temperature range: Max.77°F (25°C)
- Individual branch circuit required: 10Amp minimum
- Operating water depth: minimum, 1 in.
- Ending water level: maximum, 1/4 in.
- Discharge connection: 1in. NPT thread or 3/4 in. garden hose thread
- Discharge hose size: 1/2 in. or above
- Motor: Permanent Split Capacitor, with thermal overload protection

# TROUBLESHOOTING GUIDE CHECKLIST

Do not disassemble the motor housing. This motor has NO repairable internal parts, and disassembly may cause dangerous electrical wiring issues. DO NOT lift up the pump by power cord.



Item	Description	Quantity
1	Pump Cord	1
2	Adaptor	1
3	Handle	1
4	Motor	1
5	Shaft	1
6	Impeller	1
7	Gasket	1
8	Volute	1
9	Screw	8
10	Base	1
11	Screw	4

<b>Problem</b>	<b>Possible Cause</b>	<b>Corrective Action</b>
Pump does not start or run	<ol style="list-style-type: none"> <li>1. The fuse is blown.</li> <li>2. The breaker is tripped.</li> <li>3. The plug is disconnected.</li> <li>4. The plug is corroded.</li> <li>5. The motor failed.</li> <li>6. Ice or blockage has locked the impeller.</li> </ol>	<ol style="list-style-type: none"> <li>1. Replace the fuse.</li> <li>2. Reset the breaker.</li> <li>3. Secure the plug.</li> <li>4. Clean the plug prongs.</li> <li>5. Replace the pump.</li> <li>6. Remove the blockage.</li> </ol>
Pump cannot pump water out	<ol style="list-style-type: none"> <li>1. The screen is blocked.</li> <li>2. The hose is kinked, bent sharply, or coiled.</li> <li>3. There is airlock.</li> <li>4. The hose length is too long.</li> <li>5. The impeller is loose on the shaft.</li> <li>6. The impeller is broken.</li> </ol>	<ol style="list-style-type: none"> <li>1. Clean the screen.</li> <li>2. Straighten the hose.</li> <li>3. Clean the anti-air lock hole.</li> <li>4. Use a shorter hose.</li> <li>5. Reassemble the impeller.</li> <li>6. Replace the impeller.</li> </ol>

## **WARNING:**

This product can expose you to chemicals including Lead and Di (2-ethylhexyl) phthalate (DEHP), which are known to the State of California to cause cancer and birth defects or other reproductive harm. For more information go to [www.P65Warnings.ca.gov](http://www.P65Warnings.ca.gov).

Exclusively Distributed By:  
 HD Supply  
 3400 Cumberland Blvd. SE  
 Atlanta, GA 30339

HD Supply is here to help.  
 Online Chat: [hdsupplysolutions.com](http://hdsupplysolutions.com)  
 Email: [customercare@hdsupply.com](mailto:customercare@hdsupply.com)  
 Call: 1-800-431-3000

© 2025  
 Made in China